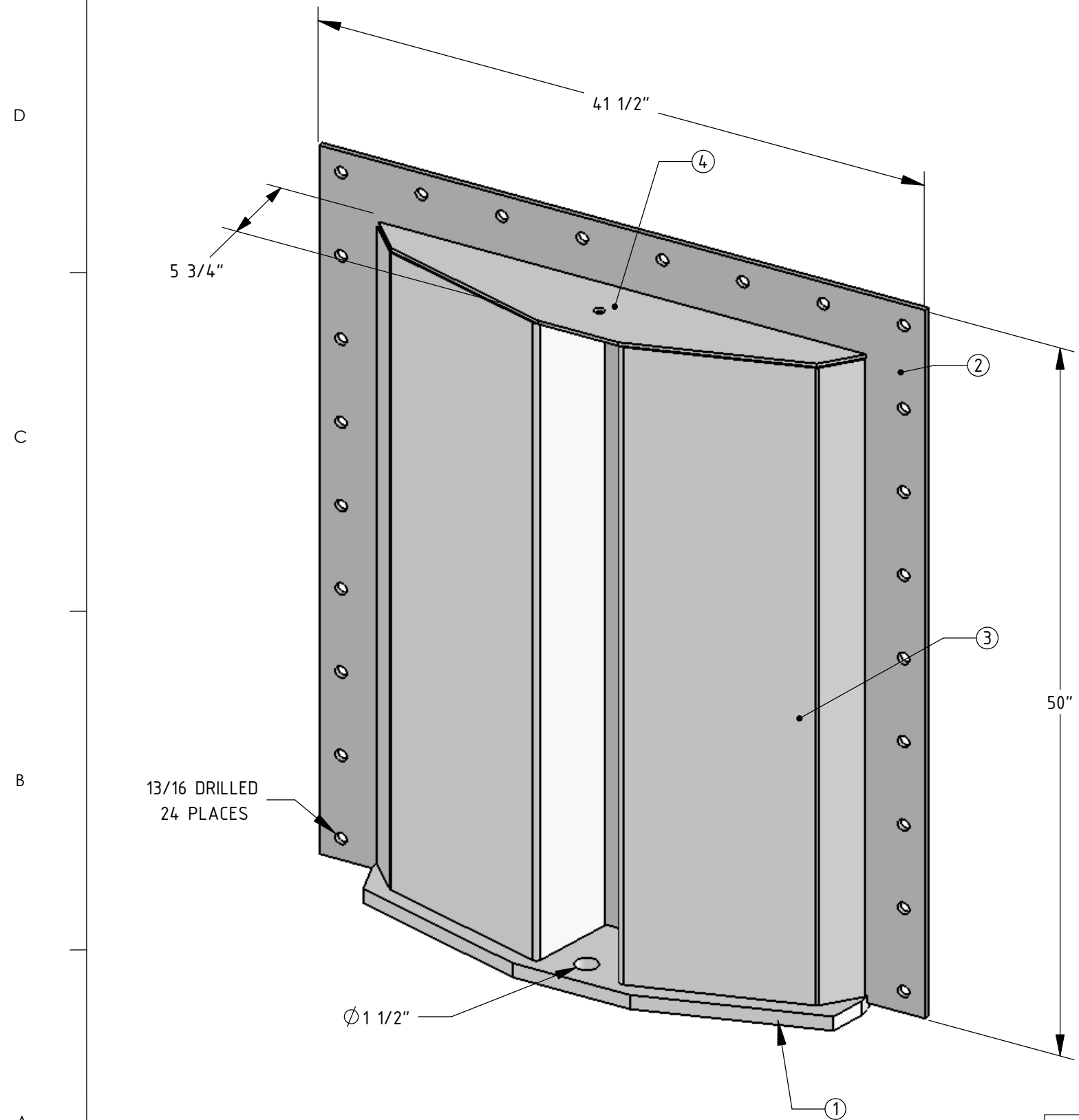


8 7 6 5 4 3 2 1

REVISIONS				
REV	DESCRIPTION	ZONE	NAME	DATE
A	RELEASED		M.C.F.	2004-12-22

ITEM NO.	QTY.	PART NO.	NOTES
1	1	24-09-101-A Bottom flange	1" plt
2	1	24-09-102-A Bolt Plate	3/8 plt
3	2	24-09-103-A Stiffener	1/4 plt
4	1	24-09-104-A Stiffener Cap	1/4 plt



416 lbs ASSEMBLED WEIGHT

31.77 sq-ft EXPOSED SURFACE AREA

FINISHING OF EXPOSED SURFACES;

**COMMERCIAL BLAST CLEAN TO SSPC-SP6 STANDARD.
 IMMEDIATELY PRIME WITH ONE COAT ONLY OF ZINC RICH PRIMER.
 (AMERON DIMETCOAT 9HS, CARBOLINE CARBOZINC 11 OR EQUAL)
 FOLLOW ALL MANUFACTURER'S APPLICATION INSTRUCTIONS.
 SPRAY EQUIPMENT SHOULD USE AGITATED PRESSURE POT TO
 KEEP ZINC UNIFORMLY MIXED DURING APPLICATION.
 OVERCOAT WITH ONE COAT ONLY OF WHITE SILOXANE EPOXY.
 (AMERON PSX 700, CARBOLINE CARBOXANE 2000 OR EQUAL).**

**BACK SIDE OF 24-09-102 BOLT PLATE FINISHED WITH A PRIME
 COAT ONLY, NO OVERCOAT REQUIRED.
 SEE SHEET 2 FOR DETAIL**

THIS DRAWING IS THE PROPERTY OF AND CONTAINS CONFIDENTIAL INFORMATION PROPRIETARY TO THE UNIVERSITY OF CALIFORNIA AND SHALL BE USED ONLY FOR THE PURPOSE FOR WHICH IT WAS PROVIDED AND SHALL NOT BE REPRODUCED OR DISCLOSED TO OTHERS.

	NAME	DATE
DRAWN	M. C. FLEMING	2004-12-22
CHECKED		
MATERIAL		
FINISH		

UNLESS OTHERWISE SPECIFIED DIMENSIONS ARE INCHES & DEGREES		
TOLERANCES:	LINEAR	ANGLE
WHOLE & FRACTION	± 1/16	± 1°
DECIMAL X.X	± 0.1	± 0.1°
DECIMAL X.XX	± 0.01	± 0.01°
DECIMAL X.XXX	± 0.005	± 0.001°
BREAK SHARP EDGES 0.010 RAD ± 0.003		
MACHINED SURF FINISH < 125 MICROINCH		
WEIGHT:		
SCALE:		

RADIO ASTRONOMY LAB
 University of California - Berkeley
 Tel: 510-642-5040 Fax: 510-642-3411

**CARMA 6m Base,
 Leg Adaptor, Assembly**

B	24-09-100	1 of 3	A
SIZE	DWG NUM:	SHEET	OF REV.

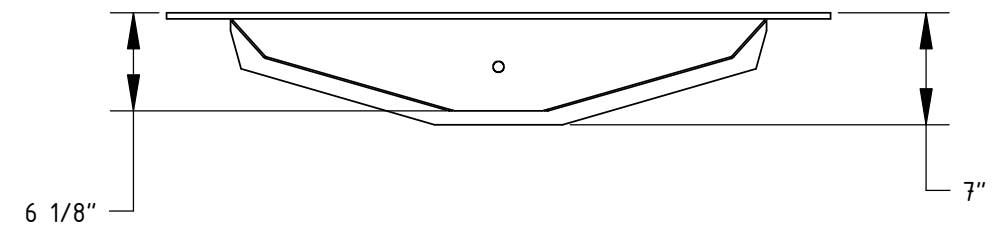
8 7 6 5 4 3 2 1

8 7 6 5 4 3 2 1

REVISIONS				
REV	DESCRIPTION	ZONE	NAME	DATE
A	RELEASED		M.C.F.	2004-12-22

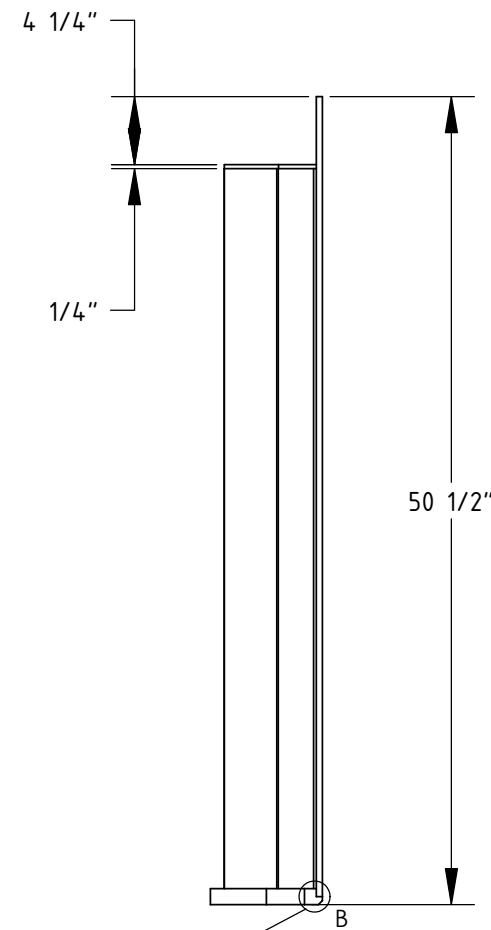
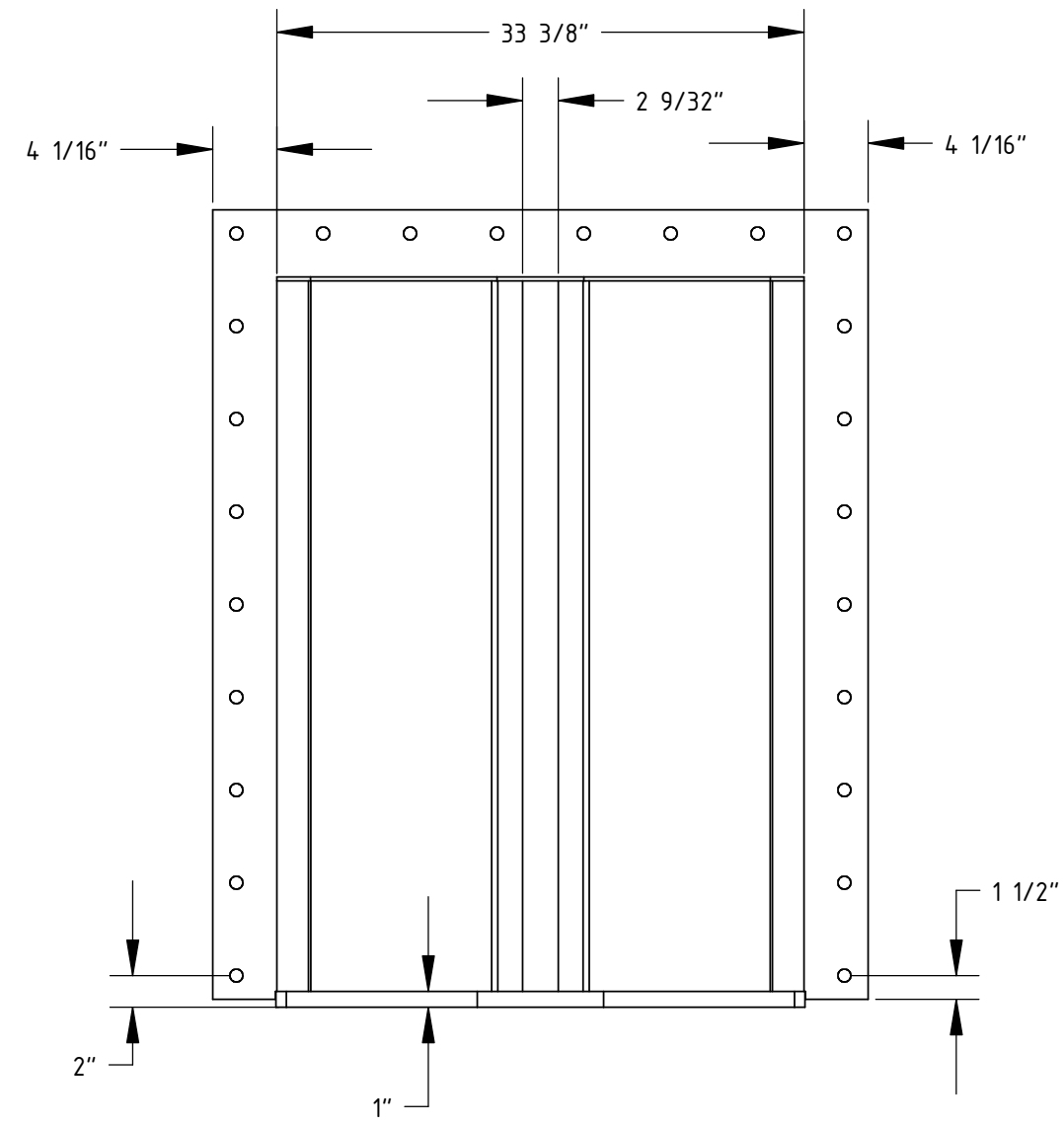
D
C
B
A

D
C
B
A

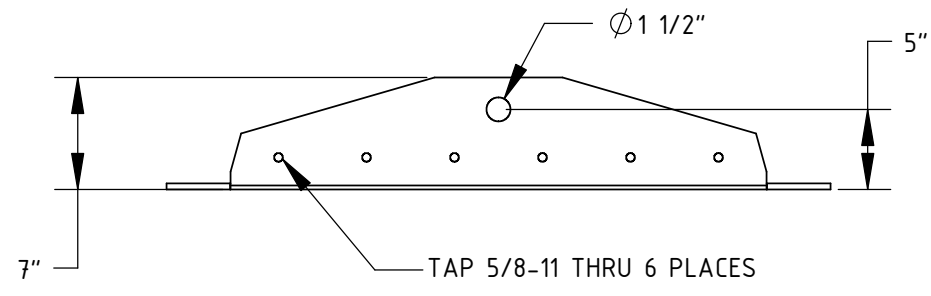
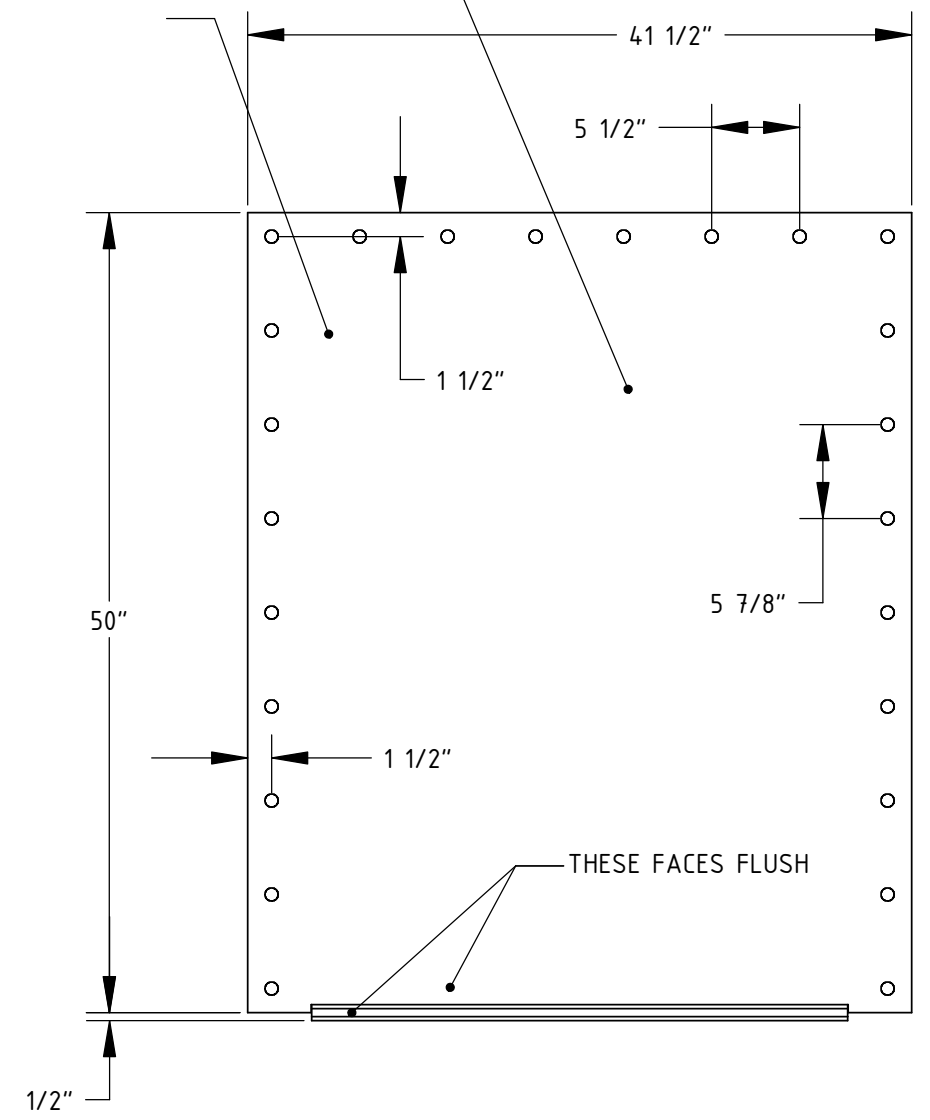


BOLT PLATE MUST REMAIN FLAT,
AN OPTION IS TO BOLT TWO PLATES
BACK TO BACK AND WELD TWO ASSEMBLIES
SIMULTANEOUSLY.

BACK SIDE OF 24-09-102 BOLT PLATE
FINISHED WITH A PRIME COAT ONLY,
NO OVERCOAT.



DETAIL B
SCALE 1 : 2
1/4" X 45°
CHAMFER



THIS DRAWING IS THE PROPERTY OF AND CONTAINS CONFIDENTIAL
INFORMATION PROPRIETARY TO THE UNIVERSITY OF CALIFORNIA AND
SHALL BE USED ONLY FOR THE PURPOSE FOR WHICH IT WAS PROVIDED
AND SHALL NOT BE REPRODUCED OR DISCLOSED TO OTHERS.

NAME	DATE
DRAWN M. C. FLEMING	2004-12-22
CHECKED	
MATERIAL	
FINISH	

UNLESS OTHERWISE SPECIFIED DIMENSIONS ARE INCHES & DEGREES		
TOLERANCES:	LINEAR	ANGLE
WHOLE & FRACTION	± 1/16	± 1°
DECIMAL X.X	± 0.1	± 0.1°
DECIMAL X.XX	± 0.01	± 0.01°
DECIMAL X.XXX	± 0.005	± 0.001°
BREAK SHARP EDGES 0.010 RAD ± 0.003		
MACHINED SURF FINISH < 125 MICROINCH		
WEIGHT:		
SCALE:		

RADIO ASTRONOMY LAB
University of California - Berkeley
Tel: 510-642-5040 Fax: 510-642-3411

**CARMA 6m Base,
Leg Adaptor, Assembly**

B	24-09-100	2 of 3	A
SIZE	DWG NUM:	SHEET	OF REV.

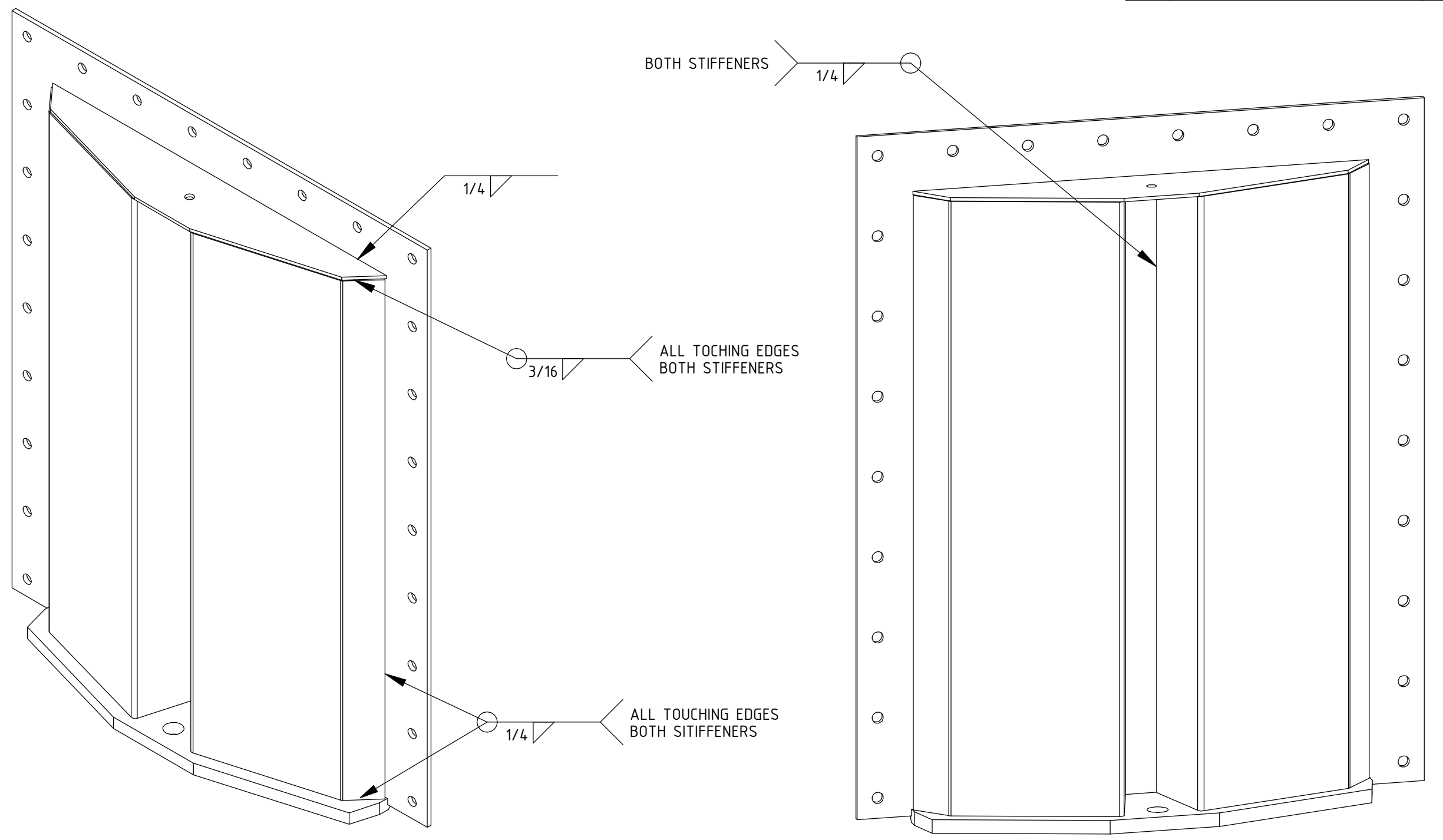
8 7 6 5 4 3 2 1

8 7 6 5 4 3 2 1

REVISIONS				
REV	DESCRIPTION	ZONE	NAME	DATE
A	RELEASED		M.C.F.	2004-12-22

D
C
B
A

D
C
B
A



WELDS MUST SEAL ALL JOINTS
AGAINST RAIN WATER INTRUSION

THIS DRAWING IS THE PROPERTY OF AND CONTAINS CONFIDENTIAL INFORMATION PROPRIETARY TO THE UNIVERSITY OF CALIFORNIA AND SHALL BE USED ONLY FOR THE PURPOSE FOR WHICH IT WAS PROVIDED AND SHALL NOT BE REPRODUCED OR DISCLOSED TO OTHERS.

	NAME	DATE
DRAWN	M. C. FLEMING	2004-12-22
CHECKED		
MATERIAL		
FINISH		

UNLESS OTHERWISE SPECIFIED DIMENSIONS ARE INCHES & DEGREES		
TOLERANCES:	LINEAR	ANGLE
WHOLE & FRACTION	± 1/16	± 1°
DECIMAL X.X	± 0.1	± 0.1°
DECIMAL X.XX	± 0.01	± 0.01°
DECIMAL X.XXX	± 0.005	± 0.001°
BREAK SHARP EDGES 0.010 RAD ± 0.003 MACHINED SURF FINISH < 125 MICROINCH		
WEIGHT:		
SCALE:		

RADIO ASTRONOMY LAB
University of California - Berkeley
Tel: 510-642-5040 Fax: 510-642-3411

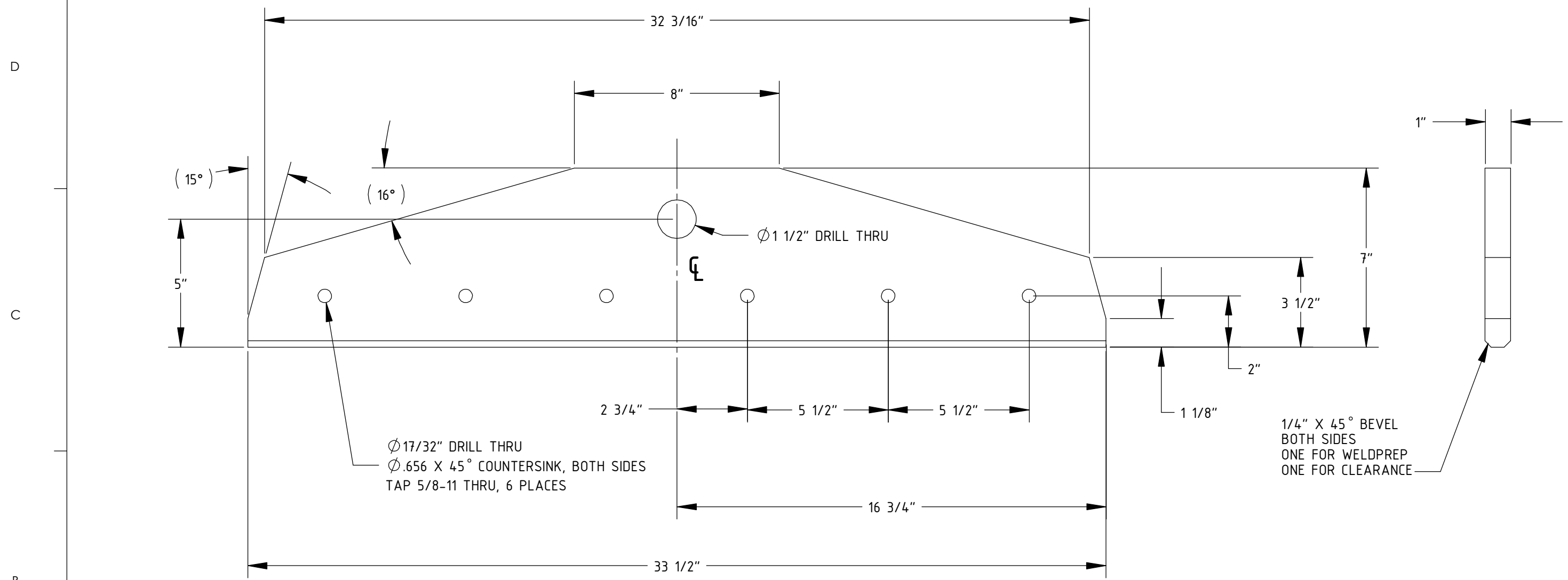
**CARMA 6m Base,
Leg Adaptor, Assembly**

B	24-09-100	3 of 3	A
SIZE	DWG NUM:	SHEET	OF REV.

8 7 6 5 4 3 2 1

8 7 6 5 4 3 2 1

REVISIONS				
REV	DESCRIPTION	ZONE	NAME	DATE
A	RELEASED		M.C.F.	2004-12-22



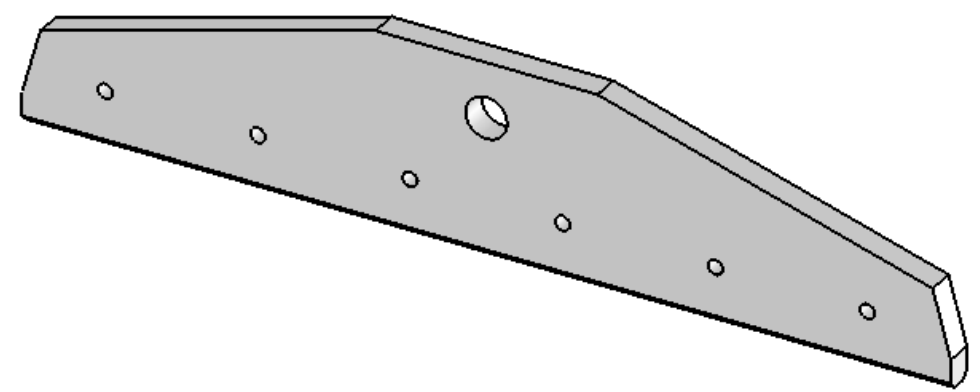
$\phi 17/32$ " DRILL THRU
 $\phi .656 \times 45^\circ$ COUNTERSINK, BOTH SIDES
 TAP 5/8-11 THRU, 6 PLACES

$\phi 1 1/2$ " DRILL THRU

$1/4$ " X 45° BEVEL
 BOTH SIDES
 ONE FOR WELDPREP
 ONE FOR CLEARANCE

ALL HOLES SYMETRICAL TO ϕ

1 REQUIRED PER ASSEM



THIS DRAWING IS THE PROPERTY OF AND CONTAINS CONFIDENTIAL INFORMATION PROPRIETARY TO THE UNIVERSITY OF CALIFORNIA AND SHALL BE USED ONLY FOR THE PURPOSE FOR WHICH IT WAS PROVIDED AND SHALL NOT BE REPRODUCED OR DISCLOSED TO OTHERS.

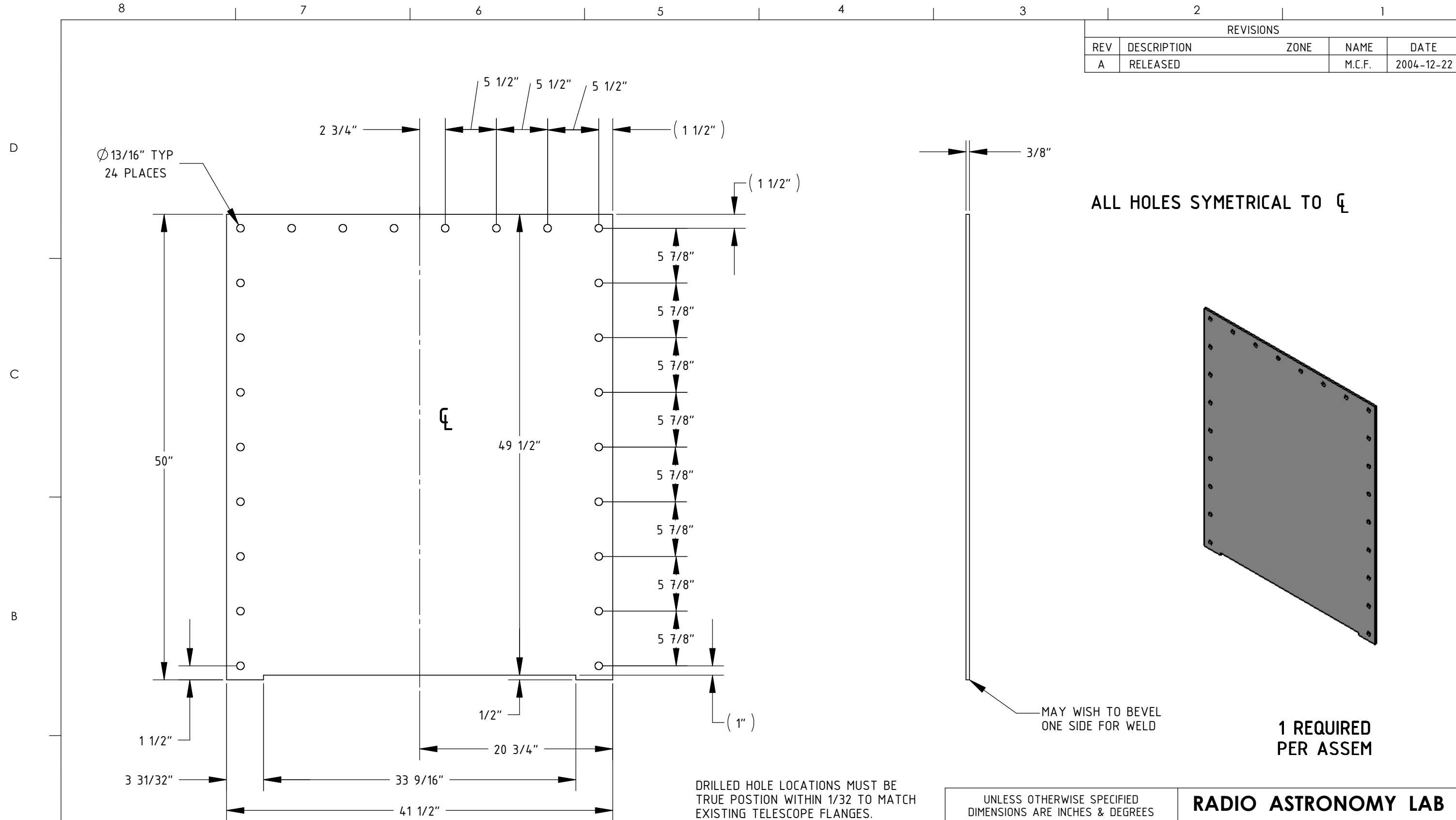
	NAME	DATE
DRAWN	M. C. FLEMING	2004-12-22
CHECKED		
MATERIAL	STEEL, A-36, 1" THICK BURNED	
FINISH		

UNLESS OTHERWISE SPECIFIED DIMENSIONS ARE INCHES & DEGREES		
TOLERANCES:	LINEAR	ANGLE
WHOLE & FRACTION	$\pm 1/16$	$\pm 1^\circ$
DECIMAL X.X	± 0.1	$\pm 0.1^\circ$
DECIMAL X.XX	± 0.01	$\pm 0.01^\circ$
DECIMAL X.XXX	± 0.005	$\pm 0.001^\circ$
BREAK SHARP EDGES 0.010 RAD ± 0.003		
MACHINED SURF FINISH < 125 MICROINCH		
WEIGHT: 51.0 lbs		
SCALE:		

RADIO ASTRONOMY LAB			
University of California - Berkeley Tel: 510-642-5040 Fax: 510-642-3411			
CARMA 6m Base, Leg Adaptor, Bottom Flange			
B	24-09-101	1 of 1	A
SIZE	DWG NUM:	SHEET	OF REV.

8 7 6 5 4 3 2 1

REVISIONS				
REV	DESCRIPTION	ZONE	NAME	DATE
A	RELEASED		M.C.F.	2004-12-22



DRILLED HOLE LOCATIONS MUST BE TRUE POSITION WITHIN 1/32 TO MATCH EXISTING TELESCOPE FLANGES.

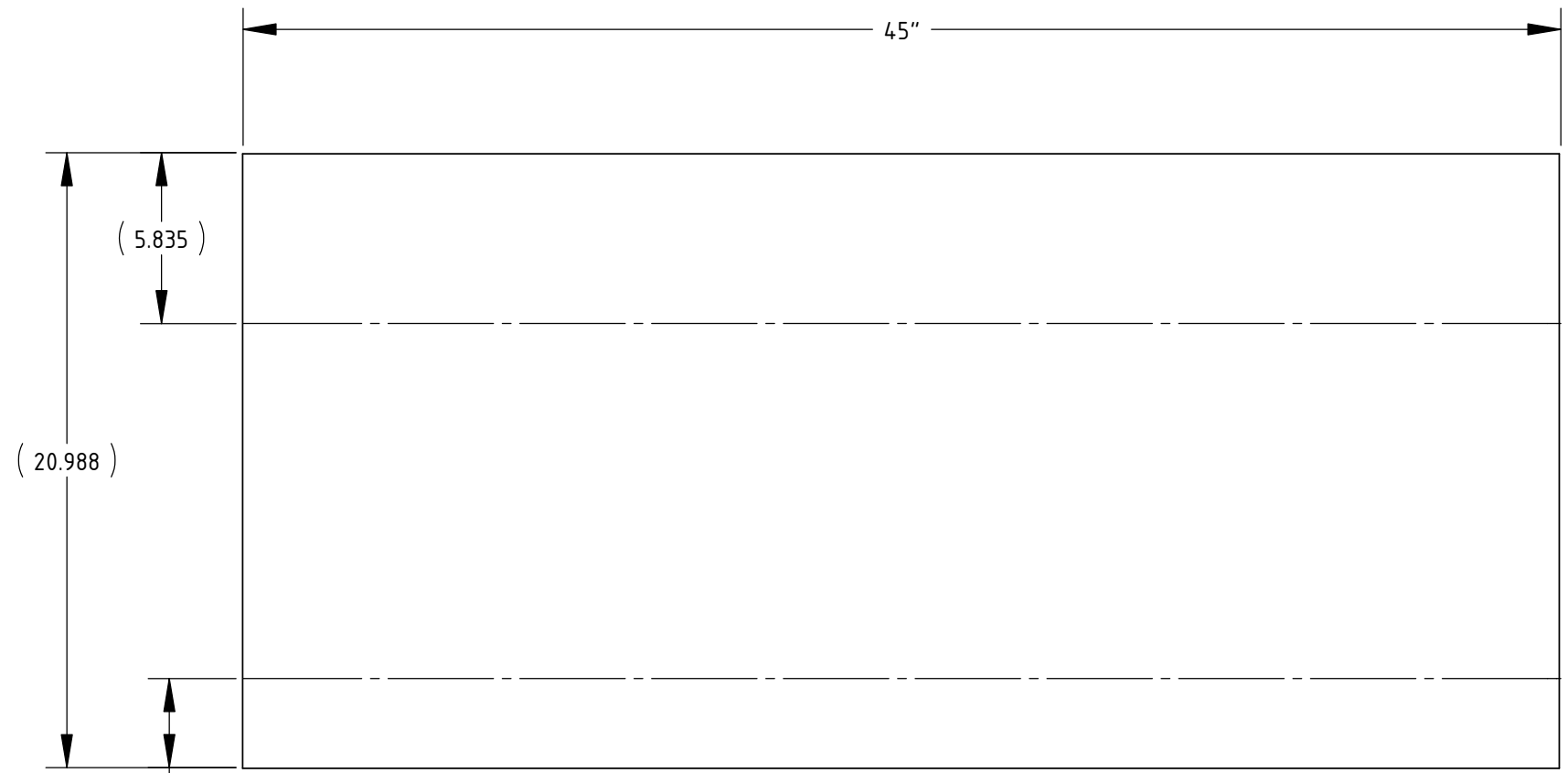
UNLESS OTHERWISE SPECIFIED DIMENSIONS ARE INCHES & DEGREES		
TOLERANCES:	LINEAR	ANGLE
WHOLE & FRACTION	± 1/32	± 1°
DECIMAL X.X	± 0.1	± 0.1°
DECIMAL X.XX	± 0.01	± 0.01°
DECIMAL X.XXX	± 0.005	± 0.001°
BREAK SHARP EDGES 0.010 RAD ± 0.003		
MACHINED SURF FINISH < 125 MICROINCH		
WEIGHT:	221.5 lbs	
SCALE:		

RADIO ASTRONOMY LAB			
University of California - Berkeley Tel: 510-642-5040 Fax: 510-642-3411			
CARMA 6m Base, Leg Adaptor Bolt Plate			
B	24-09-102	1 of 1	A
SIZE	DWG NUM:	SHEET	OF REV.

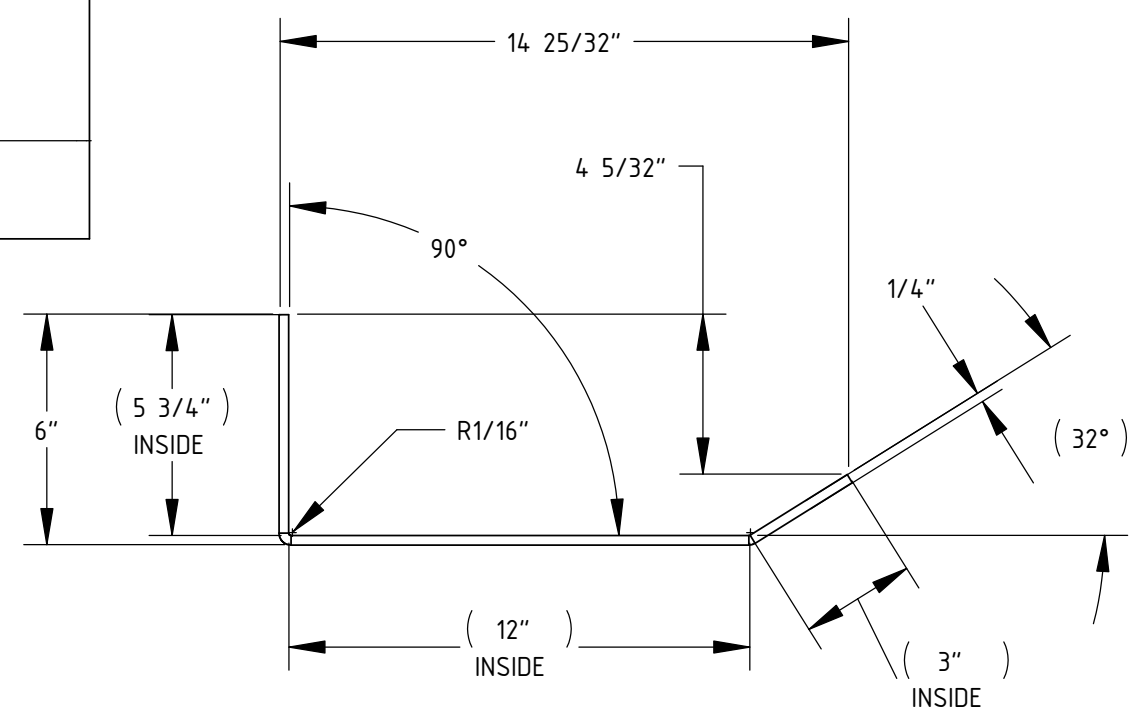
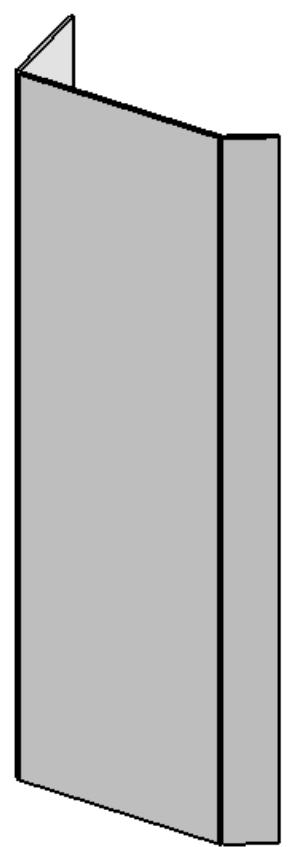
NAME	DATE
DRAWN M. C. FLEMING	2004-12-22
CHECKED	
MATERIAL	STEEL, A-36, 3/8" THICK
FINISH	

THIS DRAWING IS THE PROPERTY OF AND CONTAINS CONFIDENTIAL INFORMATION PROPRIETARY TO THE UNIVERSITY OF CALIFORNIA AND SHALL BE USED ONLY FOR THE PURPOSE FOR WHICH IT WAS PROVIDED AND SHALL NOT BE REPRODUCED OR DISCLOSED TO OTHERS.

REVISIONS				
REV	DESCRIPTION	ZONE	NAME	DATE
A	RELEASED		M.C.F.	2004-12-22



FLATTENED VIEW



**2 REQUIRED
PER ASSEM**

THIS DRAWING IS THE PROPERTY OF AND CONTAINS CONFIDENTIAL INFORMATION PROPRIETARY TO THE UNIVERSITY OF CALIFORNIA AND SHALL BE USED ONLY FOR THE PURPOSE FOR WHICH IT WAS PROVIDED AND SHALL NOT BE REPRODUCED OR DISCLOSED TO OTHERS.

	NAME	DATE
DRAWN	M. C. FLEMING	2004-12-22
CHECKED		
MATERIAL	STEEL, A-36, 1/4" THICK	
FINISH		

UNLESS OTHERWISE SPECIFIED DIMENSIONS ARE INCHES & DEGREES		
TOLERANCES:	LINEAR	ANGLE
WHOLE & FRACTION	± 1/16	± 1°
DECIMAL X.X	± 0.1	± 0.1°
DECIMAL X.XX	± 0.01	± 0.01°
DECIMAL X.XXX	± 0.005	± 0.001°
BREAK SHARP EDGES 0.010 RAD ± 0.003 MACHINED SURF FINISH < 125 MICROINCH		
WEIGHT: 66.8 lbs		
SCALE:		

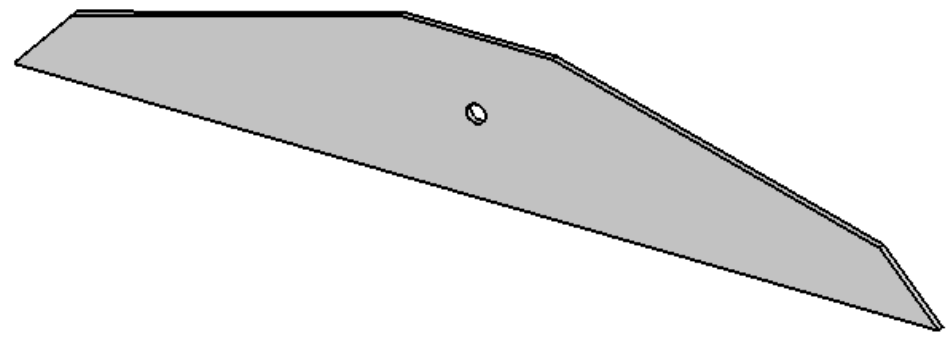
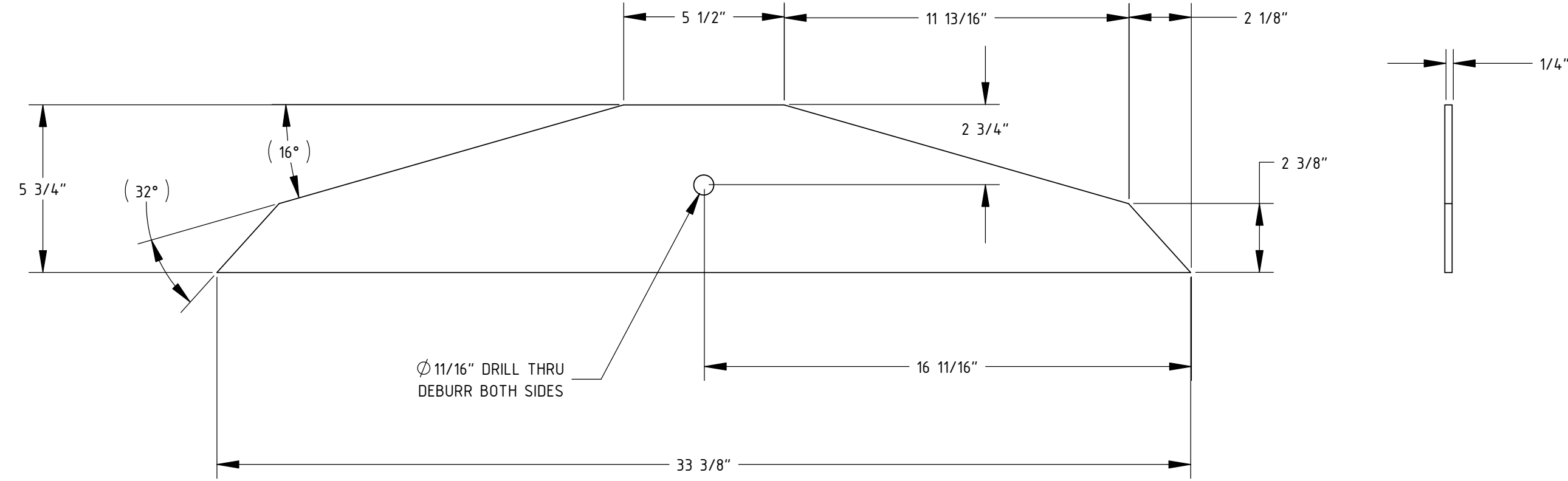
RADIO ASTRONOMY LAB			
University of California - Berkeley Tel: 510-642-5040 Fax: 510-642-3411			
CARMA 6m Base, Leg Adaptor, Stiffener			
B	24-09-103	1 of 1	A
SIZE	DWG NUM:	SHEET	OF REV.

8 7 6 5 4 3 2 1

REVISIONS				
REV	DESCRIPTION	ZONE	NAME	DATE
A	RELEASED		M.C.F.	2004-12-22

D
C
B
A

D
C
B
A



**1 REQUIRED
PER ASSEM**

UNLESS OTHERWISE SPECIFIED DIMENSIONS ARE INCHES & DEGREES		
TOLERANCES:	LINEAR	ANGLE
WHOLE & FRACTION	± 1/16	± 1°
DECIMAL X.X	± 0.1	± 0.1°
DECIMAL X.XX	± 0.01	± 0.01°
DECIMAL X.XXX	± 0.005	± 0.001°
BREAK SHARP EDGES 0.010 RAD ± 0.003 MACHINED SURF FINISH < 125 MICROINCH		
WEIGHT: 9.372 lbs		
SCALE:		

RADIO ASTRONOMY LAB			
University of California - Berkeley Tel: 510-642-5040 Fax: 510-642-3411			
CARMA 6m Base, Leg Adaptor, Cap			
B	24-09-104	1 of 1	A
SIZE	DWG NUM:	SHEET	OF REV.

NAME	DATE
DRAWN M. C. FLEMING	2004-12-22
CHECKED	
MATERIAL	
STEEL, A-36, 1/4" THICK BURNED	
FINISH	

THIS DRAWING IS THE PROPERTY OF AND CONTAINS CONFIDENTIAL INFORMATION PROPRIETARY TO THE UNIVERSITY OF CALIFORNIA AND SHALL BE USED ONLY FOR THE PURPOSE FOR WHICH IT WAS PROVIDED AND SHALL NOT BE REPRODUCED OR DISCLOSED TO OTHERS.

8 7 6 5 4 3 2 1