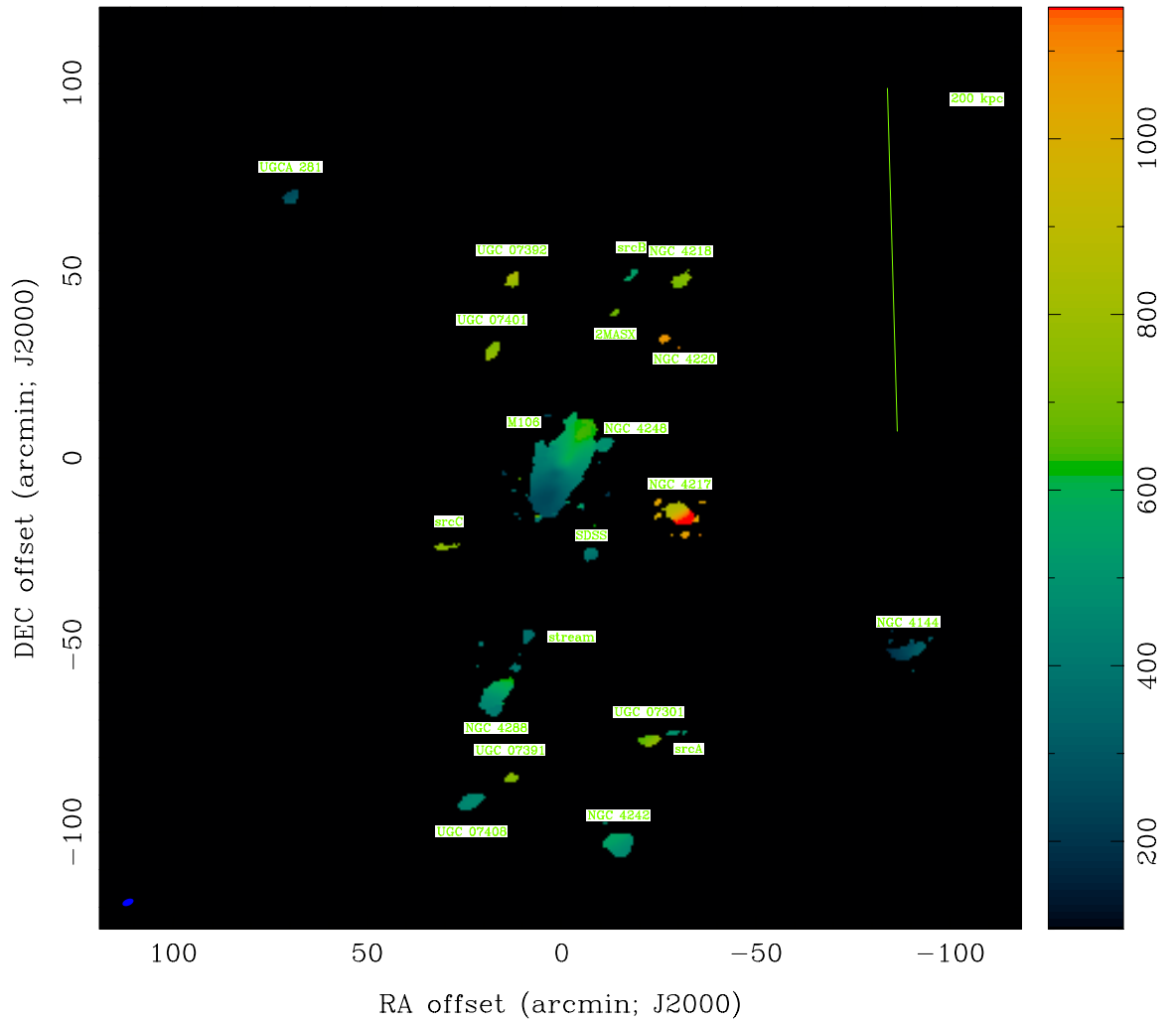


RA, DEC, VELO = 12:18:57.500, 47:18:14.00, 6.85828E+02 km/s at pixel (198.00, 198.00, 1.00)  
 Spatial region : 1,1 to 394,394  
 Pixel map image: comb.mom0 (m106) Min/max=0/31.49 Range = 0 to 31.79 JY/BEAM. (log)

Figure 4: Moment 0 map of the detected sources with 200 kpc at the distance to M106 indicated.



RA, DEC, VELO = 12:18:57.500, 47:18:14.00, 6.85828E+02 km/s at pixel (198.00, 198.00, 1.00)  
 Spatial region : 1,1 to 394,394  
 Pixel map image: comb.mom1 (m106) Min/max=0/1185 Range = 100 to 1150 KM/S (lin)

Figure 5: Moment 1 map of the detected sources with 200 kpc at the distance to M106 indicated.

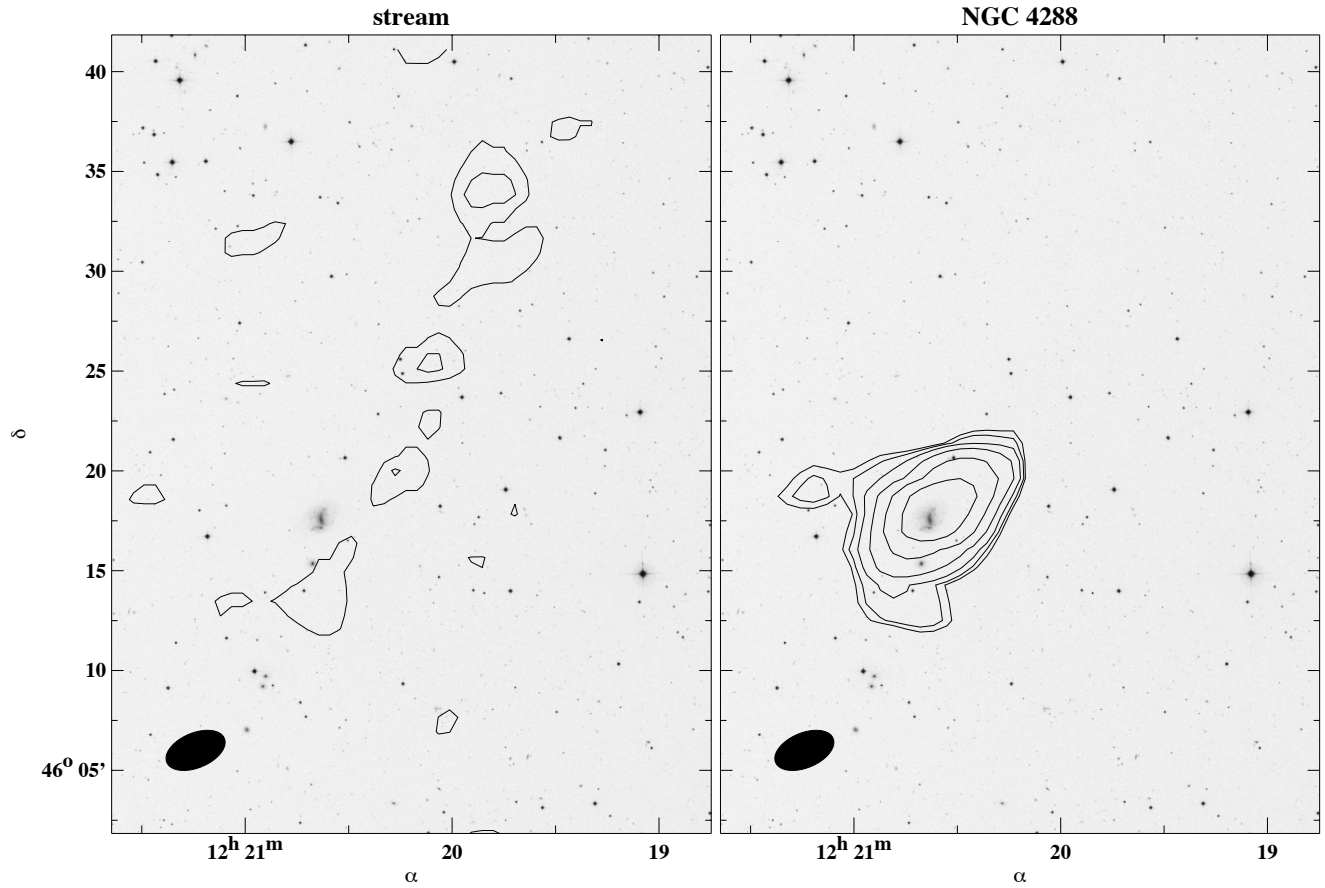


Figure 1: **Left Panel:** Moment 0 contours of stream from channels 65-66 (velocities 383 - 405 km/s) overlaid on DSS image. **Right Panel:** Moment 0 contours of NGC 4288 from channels 67-78 (velocities 426 - 664 km/s) overlaid on the same DSS image. Contour levels are 3 sigma in 1 channel  $\times 2^n$  starting with  $n = 0$ , which corresponds to  $N_{HI} = 1.05 \times 10^{19} \text{ cm}^{-2} \times 2^n$ .